



# Policy & Evaluation cycle

Evaluation contributes to needs

June 26



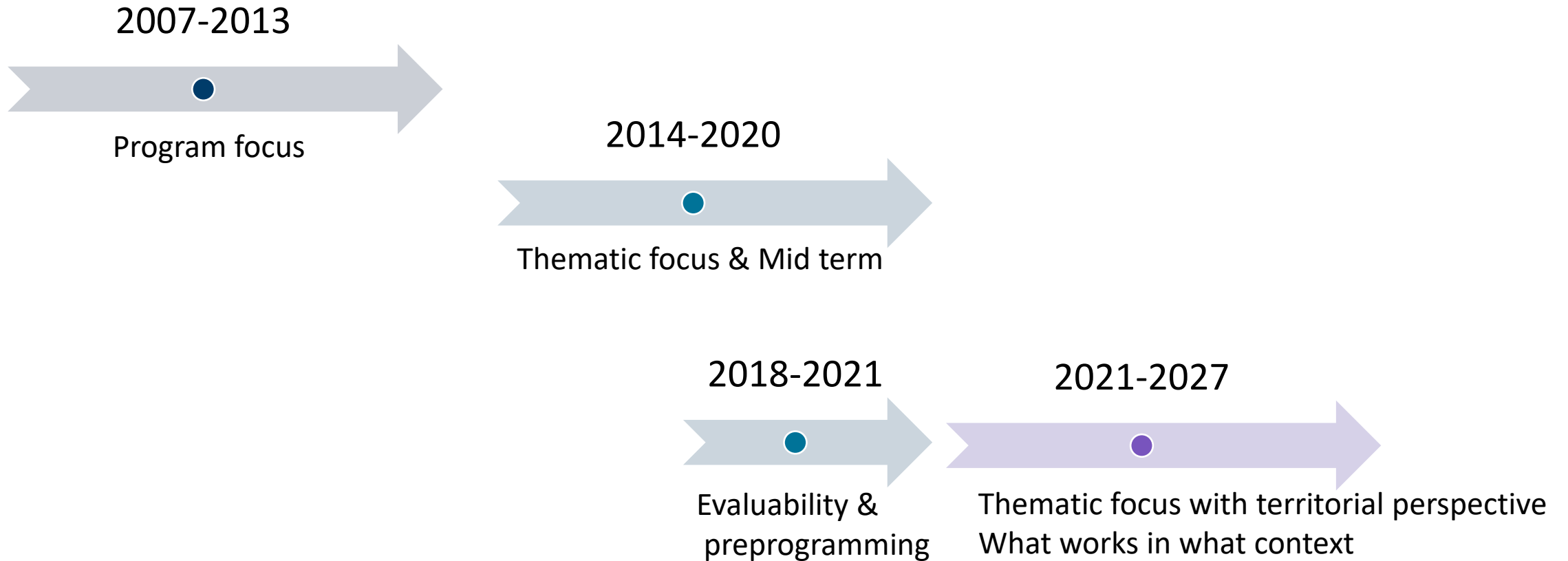
Co-funded by  
the European Union



Swedish Agency  
for Economic and  
Regional Growth

# Policy & Evaluation cycle

Contributions to the needs of stakeholders in local, national och EU policy making.



3 programming periods in mind



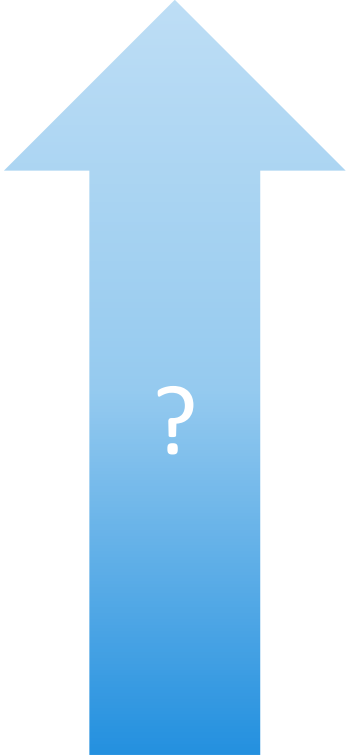
Co-funded by  
the European Union



Swedish Agency  
for Economic and  
Regional Growth

Political targets

- Agenda 2030
- Cohesion policy
- National policy
- Regional policy



Recreate with different methods and analytical approaches

Need of a clear intervention logic and to guide projects and stakeholders towards political goals

Interventions

Innovation, digitalization, energy efficiency and so.

# Process with continuous dialogue

2018-2019



- ▶ National monitoring system for regional development funds
  - *Joint structure and concepts*
  - *Basic intervention logic with 4 chains of results*
- ▶ Program theory for ERDF
  - *Basic intervention logic with 3 chains of results*
  - *Based on the ongoing programming period*



Co-funded by  
the European Union

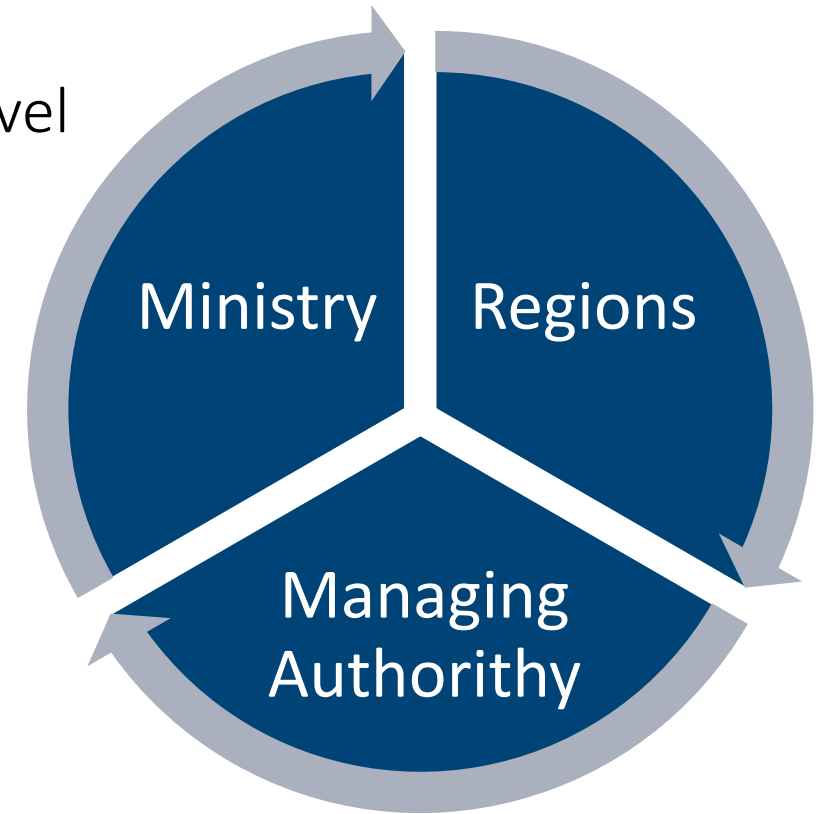


Swedish Agency  
for Economic and  
Regional Growth

# Next step – design of programs, monitoring system and evaluation plans

2020-2021

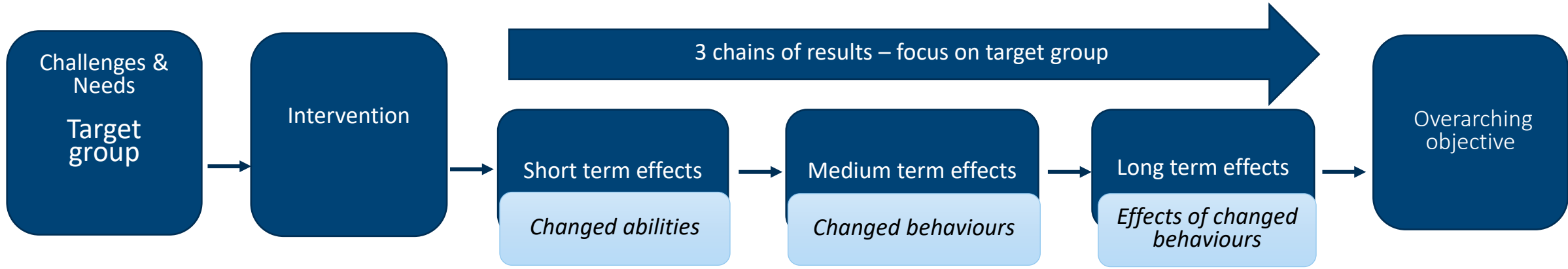
- Deeper knowledge about intervention logic at regional level
- Ministry assigned support to regions from MA
- MA created a team with experts (evaluators, monitoring, program management etc)
  - Over 20 dialog meetings
  - Manual for designing programs with intervention logic
  - Peer Review process for each program
- Evaluation plan
  - Dialogue with all regions, national authorities, ministry and organisations. What do you want to know and when?



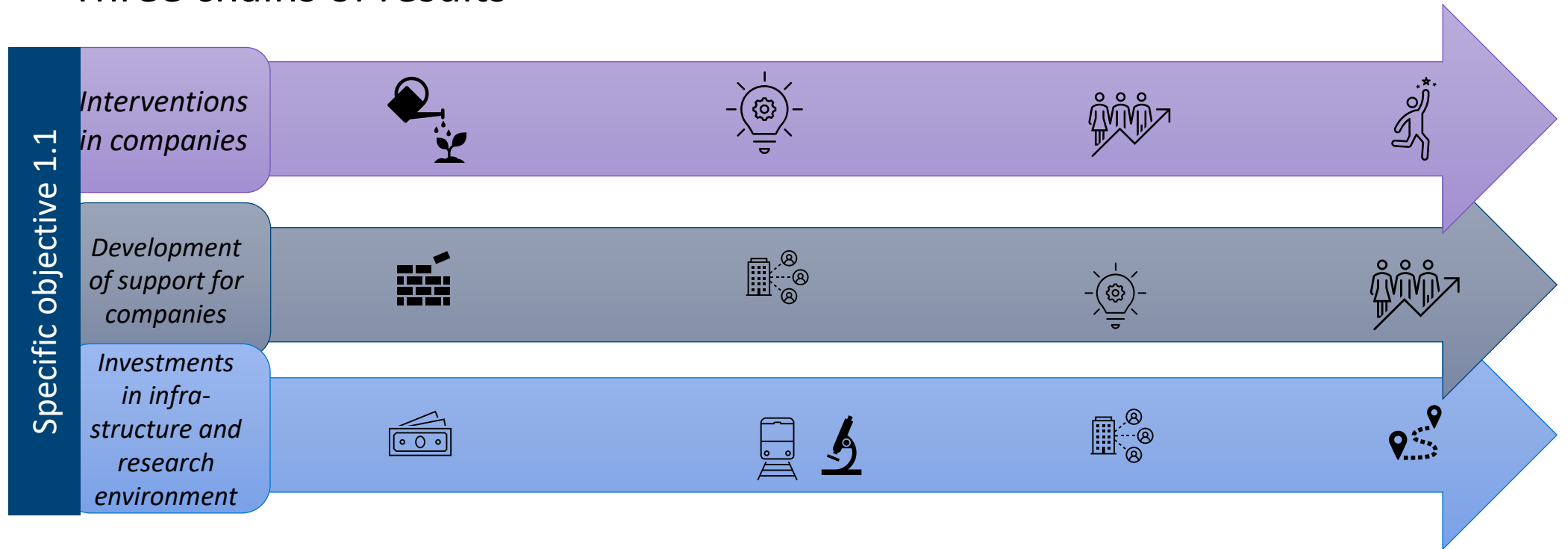
Co-funded by  
the European Union



Swedish Agency  
for Economic and  
Regional Growth

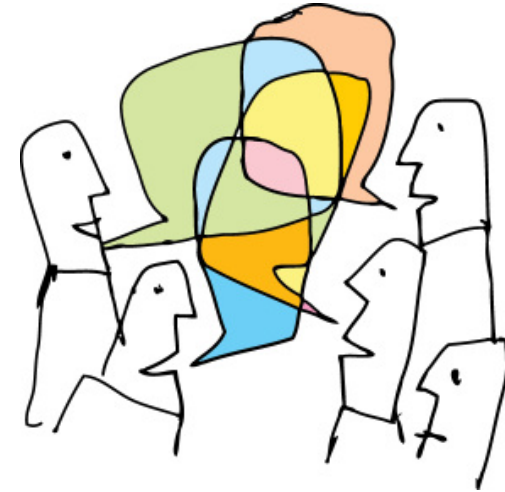


### Three chains of results



# Timing – highlight the use of every evaluation! Use the evaluation criterias and evaluation questions to clarify

= **Formative** - support and improve the design and implementation of the programmes.  
Relevance, coherence, efficiency



= **Summative** – assess impact. Effectiveness, efficiency.



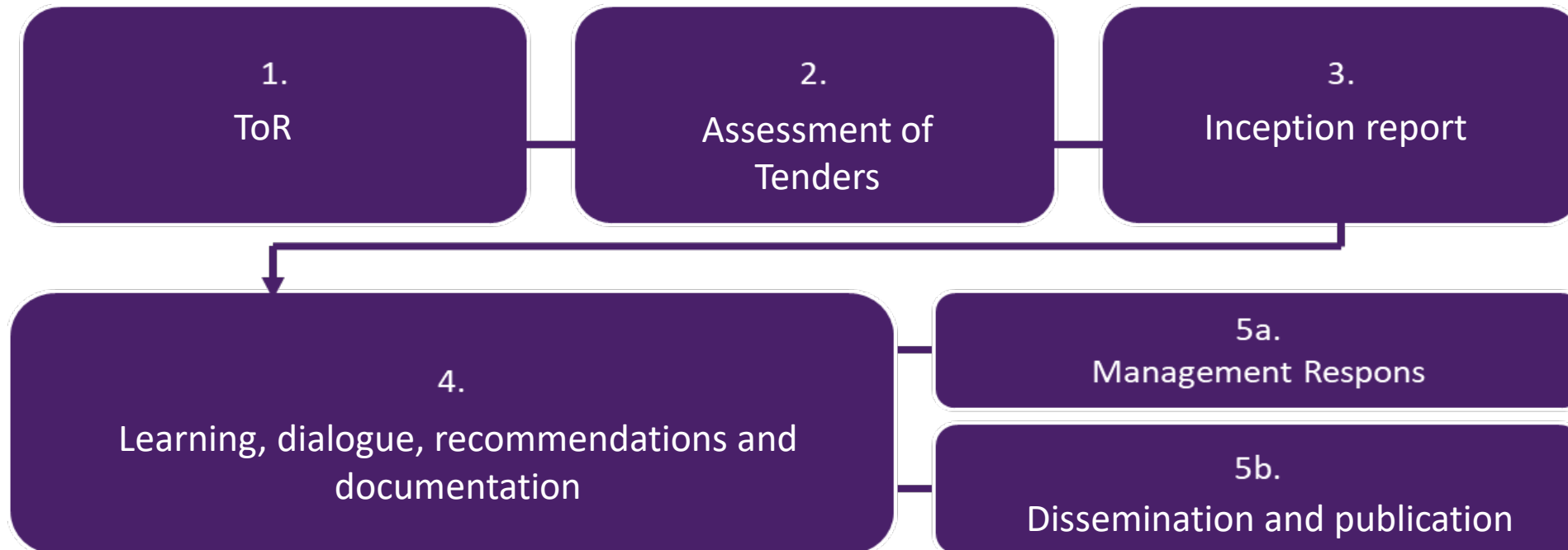
Co-funded by  
the European Union



Swedish Agency  
for Economic and  
Regional Growth

# Evaluation process

Involve stakeholders –  
need to know when?



Involve stakeholders , both during and after



Co-funded by  
the European Union





# Factors of success

- Bridge over programming periods. Past-current- future
- Stronger focus on evaluability in program designs and monitoring systems
- Involve stakeholders in an early stage and keep them interested, a sense of owner-ship
- Mix experts and experience from evaluations, monitoring, program managment and politicians
- Secure the use of each evaluation and specify who needs to know what.
- Focus on what works in what context, not so much on what don't.



Co-funded by  
the European Union



Swedish Agency  
for Economic and  
Regional Growth