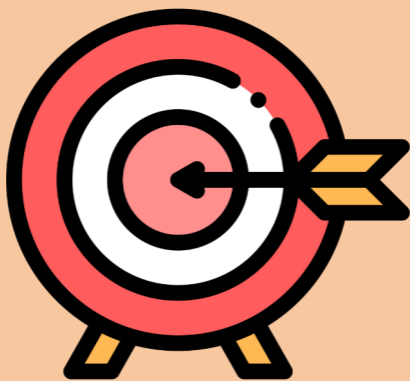




CRITERION CARD

EFFECTIVENESS





EFFECTIVENESS

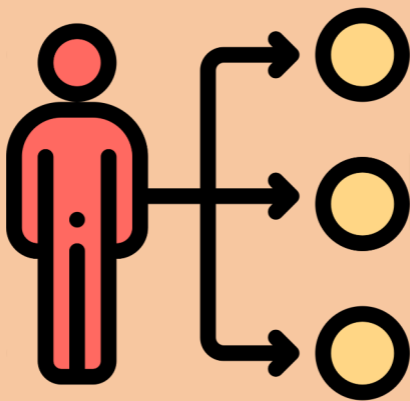
This criterion is about assessing if, how and why the intervention has had the expected effects on the different targets of the intervention.

Effectiveness questions can be answered with impact evaluation approaches when it is important to assess causal links rigorously. A key challenge in all cases is to specify what are the expected effects, for example through a logical model.



CRITERION CARD

EFFICIENCY





EFFICIENCY

This criterion is about assessing whether the effects were obtained at a reasonable cost, for example in comparison with other types of intervention.

A distinction is made between allocation efficiency (optimal use of resources) and production efficiency (cost in relation to the effects on the targets of the intervention).



CRITERION CARD

RELEVANCE





RELEVANCE

This criterion is about understanding if and how the strategy engaged in the intervention being evaluated is addressing the problems it seeks to solve or mitigate.

The key issue of relevance is problem definition. Problems are complex, they are often framed and presented in certain ways which are not explicit. Problems also change over time - it is useful to understand these changes to check whether the action is still relevant or not.



CRITERION CARD

UTILITY





UTILITY

This criterion is about judging the intervention, not only in terms of its intended effects, but also in terms of all its consequences, desirable or undesirable.

Utility is useful to evaluate complex, long-term interventions because it enables the evaluation to make more balanced judgments, in terms for instance of contribution to the general interest or the common good.



CRITERION CARD

INTERNAL COHERENCE





INTERNAL

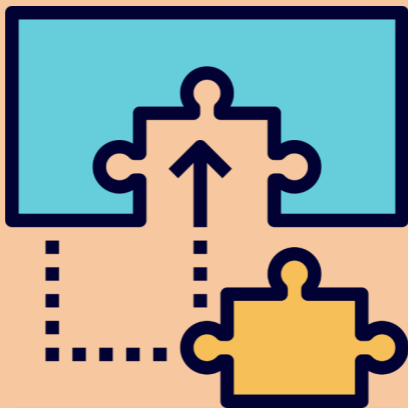
This criterion is about checking whether the different strategic and operational objectives of an action are all headed towards the the same direction.

When testing this criterion, a challenge is to verify this in theory, but also in the way the intervention was implemented.



CRITERION CARD

EXTERNAL COHERENCE





EXTERNAL

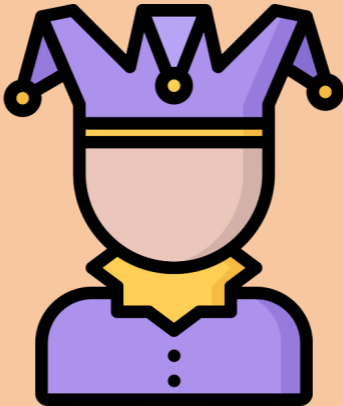
The aim is to ensure that the various stakeholders involved in the sector to which the evaluated intervention belongs are pursuing similar or complementary objectives, towards a similar direction.

When testing this criterion, a challenge is to verify this in theory, but also in the way the intervention was implemented.



CRITERION CARD

JOKER





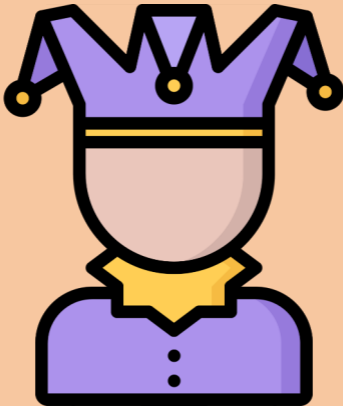
JOKER

Equity, sustainability, added
value... you choose



CRITERION CARD

JOKER





JOKER

Equity, sustainability, added value... you choose

